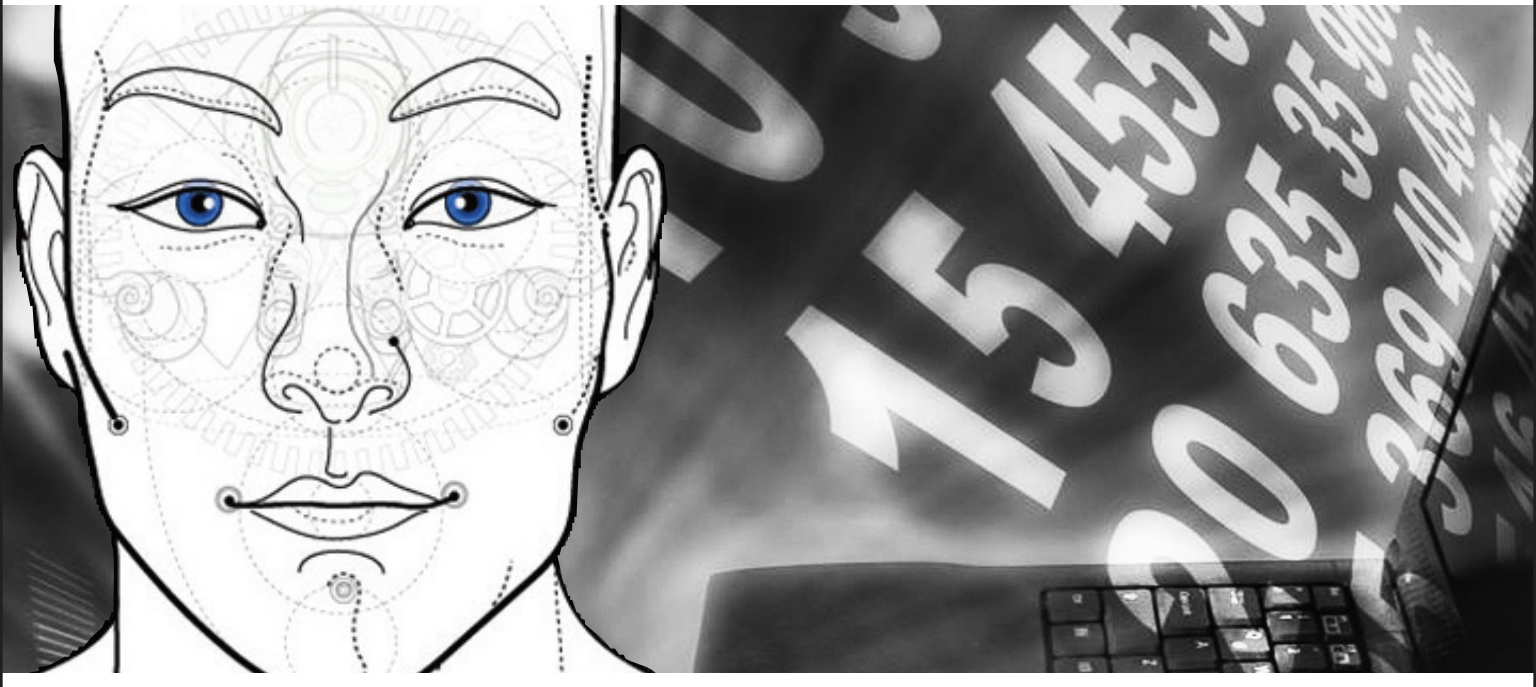


BMC Patrol

We Love This Stuff!



June 2011

Edition 2

OST OUTSOURCED BMC ADMINISTRATION

- ALL** virtual machines configured properly
- ALL** servers monitored properly
- ALL** versions kept up to date
- ALL** patches applied regularly
- ALL** new features evaluated
- ALL** servers configured properly

40% TO 70% OF OPTIMAL COMPANY LED POSITION

- Frustration
- Impossible to keep up on versions, patches, new features
- Patrol implementation ineffective

GUARANTEED 95% OF OPTIMAL OST ADMINISTRATION (OUTSOURCE)

- Always current on versions, patches, new features
- New servers and virtual machines monitored properly
- Configurations all current all the time
- Continuity – no concerns about turnover
- Superior return on investment

OST OUTSOURCED BMC ADMINISTRATION TYPICAL COST SAVINGS

CUSTOMER ADMINISTRATION

One FTE Equivalent	
W2	\$60,000
Benefits	\$10,000
Burden	\$20,000
Total	\$90,000

OST ADMINISTRATION (OUTSOURCE)

Total	\$60,000
-------	----------

THAT'S A \$30,000 COST SAVINGS!

TIPS & TECHNIQUES

Did you know that PATROL KM now supports monitoring of remote hosts using Windows Remote Management (WinRM) functionality?

For more information, click on this links below:

<http://documents.bmc.com/supportu/documents/46/90/204690/204690.pdf> (Chapter 5, page185.) UNIX and Linux KM - <http://documents.bmc.com/supportu/documents/41/84/204184/204184.pdf> (Chapter 26, page 419.)

DON'T JUST TAKE OUR WORD...

“OST’s consultants have taken the time to get know our operation and their recommendations have proven time and again to be successful. They are not only knowledgeable, but friendly and flexible.”

OST Client
Manager of Training



Above, just a few of the companies that have chosen OST as their BMC services provider.

ABOUT OST

OST (Open Systems Technologies) is an employee-owned, \$55 million company. OST has been focused on providing BMC services to Fortune companies for nearly 10 years. Since 2003, the company has logged close to 40% compounded growth in revenue and in its number of employees. In 2007, 2008, 2009 and 2010, OST was recognized in *INC. magazine's 5,000's Fastest Growing Private Companies*. OST was also listed on *CRN's Fast-Growth100* in 2007, 2008 and 2009, and on the *Michigan 50 Companies to Watch* in 2009.

TO LEARN MORE, VISIT OSTUSA.COM